

Pilsley

Parish Council

Welcome

Chairman's Report

Welcome to our Newsletter! There's been a lot going on since our last Newsletter, so let's have a look at what the Council is doing to help improve our village.

Planters: Credit for the maintenance of our lovely planters goes to the Allotment Society, who ensure that in all seasons we have dashes of colour throughout the village. No matter what the weather there's always a colourful display.

Lamppost planters

Older residents of the village will remember that up to a few years ago we always had planters on many of the lampposts in the village and now they have returned! Whilst we may be limited to the number and location of these planters – usually by the type of lamppost – we are working to improve the spread throughout the village over the coming year, so that all lampposts which can support them will be decorated.

Speed Indicator Devices

The Council received a grant from Derbyshire's Crime Commissioner to enable the installation of speed

indicator devices on the main roads through the village. Requests for such devices have been received by the Council many times over the years, but high costs prevented their installation, and the County Council were reluctant to fund them.

Currently two have been installed, on Parkhouse Road and Morton Road coming into the village and both near to the play areas, and a third is planned for Station Road, close to the Five Pits trail crossing. These are solar powered, so environmentally friendly. We have to await the results of their effectiveness from data stored in the devices and it is worth reminding drivers that, whilst they do not in themselves actively prevent speeding, the data collected and downloaded will help to inform both the local Speedwatch Team and also the Police mobile camera team. Using this data, they will be actively helping to enforce safe driving through the village in the future.

New benches and bus shelters

The Parish Council has put into effect a programme to refurbish and replace, as necessary, benches and bus shelters. This will be an ongoing

In this issue

Chairman's Report	1-2
Introducing Cllr Dan Higgon	2
District Councillor's Report	3
Speed Awareness group	3
Mark Fletcher MP writes	4
Staffa Health	4-5
Well Pharmacy	5
St Mary's Church	6
Pilsley Community Football Club	6
Women's Institute	6
Pilsley Village Sports Assoc.	7
Cricket	7
Your Councillors	8

programme over a period of years, but it is aimed at smartening up our streets, whilst making things easier and more pleasant for users.

Morton Road Recreation Ground Tree Planting

Readers of the Newsletter will be aware that a grant was secured to plant trees on the lower part of the recreation ground. This took place in February, and they have survived the spring and appear to be thriving. Allied to this the Parish Council have rethought the grass cutting strategy for this area and

continued on page 2

continued from page 1

it is now left uncut to encourage the growth of wildflowers thus creating a bio-diverse environment for the future. Work is not completed on this part of the recreation ground and future development will see: the clearing of the ditches to improve drainage and the creation of walkways and clear spaces to enable people to better enjoy the area. Also planned are improvements on the field towards the play area to allow sports activities.

Christmas Lights - Planning Ahead

In recent years we have become familiar with the two Christmas Trees on Church Street Green and Parkhouse Green. We intend to supplement these with lamppost lights this year. It is planned that these will be solar powered. Exact locations have to be worked out, but we hope we can have a brighter Christmas this year!



Sports Ground improvements

Working with the Pilsley Village Sports Association and Football club, planning is advanced for a new football pitch, which will be grant funded, to improve accessibility for the more than 17 football teams – of all levels of age, ability and gender, currently supported in the village. The Sports Association, with the Cricket and Football clubs are largely responsible for the maintenance of the existing facilities and due to their efforts there have been significant improvements to the playing areas of both sports. The parking facilities have been extended to accommodate the greater use

and to remove traffic hazards on Rupert Street on busy match days. There will also be improvements to the skatepark. More on this in the next newsletter. The Sports field is open to all – all we ask is that users respect the amount of time, money and, most of all, the voluntary effort, which goes into keeping it in good order for future generations.

Finally, the Parish has lost one of its stalwart supporters. The Rev. Lynn Hayler, who worked so hard to ensure both the pastoral and spiritual welfare of residents has left the village. This is a double loss as Steve, her husband, was also very active in supporting her and in voluntary work within and on behalf of the village. They will be sadly missed, and I would like to thank them for all the hard work over the years that they put in to helping improve our village, even in the darkest times. I am sure I will be joined in this by those residents who they came into contact with. They will be missed, and I would like to wish them all the very best in enjoying their new life!

Introducing Councillor Dan Higgon

Dan Higgon, recently elected North East Derbyshire Councillor for the Pilsley and Morton Ward.

Born in Caerphilly, Dan moved to Morton in the mid 80's and went to school in Morton and Tibshelf. Later Dan studied public services at Chesterfield College before going to the University of Leeds to study sports performance coaching.

A former captain of the Rykneld swimming club in Clay Cross, Dan also played football for the now disbanded Live & Let Live pub and currently plays regular cricket for

Alfreton Cricket Club.

Dan's worked as a substitute teacher at Tibshelf School. Prior to teaching he was the former head of swimming performance at the University of Leeds and head coach of Chesterfield Swimming Club and Cleethorpes swimming club respectably.

Currently, Dan works as a fitness instructor at Nottingham Trent University and has served as the chair of Nottingham Trent University Unison branch over the past two years.



Cllr Dan Higgon

District Councillor's Report

It may be a few months since the local council elections, but I hope that it is not too late to say thank you to everyone in the village who voted. Whilst only one in three people in Pilsley and Morton Ward did vote, that was still one of the highest turnouts figures in the area.

Control of the council changed in May, but the process of changing policy takes time and the first stage of that process happened at the end of July when a new Council Plan was adopted. I have taken on two roles at North East Derbyshire District Council, firstly as Chair of the Council's Standards Committee and secondly as a member of the Rykneld Homes Board where my task is to deliver on the commitment to build more council houses in the district. Over the years the number of council houses in North East Derbyshire has fallen from over 15,000 to about 7,500, which explains why getting a council house is now so difficult.

Two issues that have been raised with me over the last few months are the location of the start of the 30mph speed limits as drivers enter Lower Pilsley and the fact that a number of countryside footpaths are overgrown and often unwalkable as a result. I have spoken to the County Council's Highways Department about changing the point in the road where the speed limit changes from the national speed limit to 30mph to take account of the new houses that have been built in Lower Pilsley. Those requests are now being investigated but it

can be a time-consuming process and so will not happen overnight. As far as overgrown footpaths are concerned that is always an issue at this time of year and if you are aware of any in the parish please do either report it via the County Council's website or let me know and I'll be happy to report it for you.

The County Council's controlling Cabinet has recently announced two decisions that will have implications for many people in the village. Firstly, it has decided to increase the price of school meals by 95p per day for primary school aged children and a similar increase for secondary school prices. Along with my colleagues I was not told about the proposal until after the decision was taken and so I have supported a call for an explanation as to why the price rise is so great and what alternatives were considered.

The Council's Cabinet is currently consulting on its proposal to increase the fees charged to residents who receive care services from the council. These are the services that support people to live in their own home rather than having to move into residential care or remain in hospital. The Council is consulting on three

options all of which involve a substantial increase in the amount of money most people in receipt of this service would have to pay. If you would like to know more about this proposal or want to take part in the consultation details are available on the county council's website and the closing date for comments is October 4th.

Finally, the Local Government Boundary Commission for England has started one of its periodic reviews of the boundaries for Derbyshire County Council. These are the internal boundaries of the council rather than its boundaries with neighbouring counties. The aim is to make sure that each electoral area is of a similar size. Currently, Pilsley Parish is part of the Clay Cross South electoral division but the scale of the house building in the area means that some change is almost inevitable. The Council's proposal for the whole of Derbyshire is available on its website and the LGBCE will publish its draft proposals this autumn before making a final decision next spring. Any change will come into effect in 2025 when the next County Council elections take place.

Speed Awareness Group

The Pilsley Speed Awareness Group are currently looking for volunteers to help with their activities around the village.

If you are interested, please email the communications officer at communications@pilsleyparishcouncil.gov.uk

Mark Fletcher MP writes

I would usually start this newsletter by asking if you have enjoyed the summer, but after six weeks of rain, I think I will start on another topic... at the end of July I visited a number of constituents in Pilsley to discuss their concerns for a local planning application, which would see a family home on Station Road converted into a six person / three unit supported living accommodation.

Planning issues are always difficult for MPs, as the responsibility and accountability for planning falls to the relevant Local Authority, in this case North East Derbyshire District Council. However, it is my job to listen to your views and make representations on your behalf if necessary.

In my view, the property itself does seem ideal, however, it is situated along a single width, rough, un-adopted track, without any street lighting, pavements, turning space, or off-track parking and the location appears entirely unsuitable for the intended use of the property. I have also raised my concerns about the accessibility for emergency vehicles.

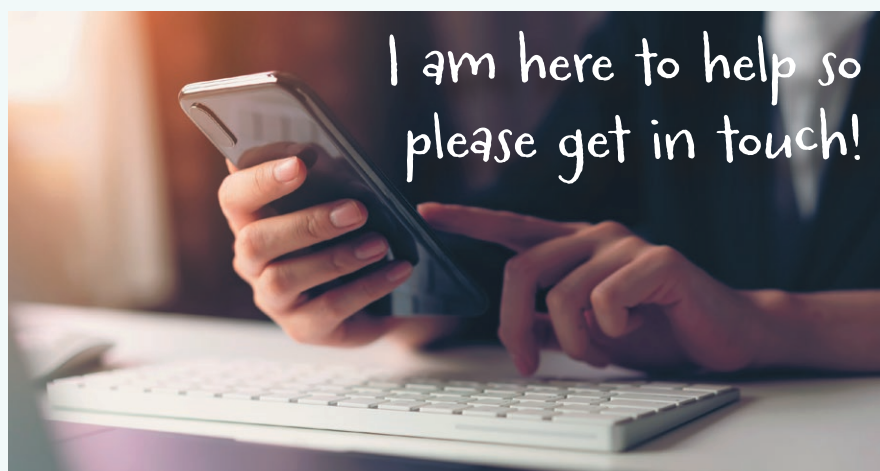
I know local people are concerned

about the long-term safety and security of both those living in and needing to access the supported living accommodation, particularly those with additional needs, and of people whose homes are also situated along the track.

It is my understanding the application has now been called in to committee and I hope that residents' concerns about the site location will be taken into full consideration.

For anyone wanting to submit a comment which can be both positive and negative then please contact the Planning Department at North East Derbyshire District Council via email (developmentcontrol@ne-derbyshire.gov.uk) or telephone (01246 217159) and remember to quote the planning reference: 23/00154/FL).

As you can see the job of an MP is extremely varied - whether that's pursuing local campaigns like securing funding for improvements to the A61 and junctions 28/29 of the M1, helping local residents with important personal issues, resolving casework like potholes, or simply someone to who can listen to your views on local and national issues. I am here to help so please get in touch!



Staffa Health

Service Update

Again, we begin with explaining that we are dealing with very high demand at the moment which puts a lot of pressure on all of the services that we offer. We thank our patients for their understanding and appreciate their frustrations. The NHS is struggling with demand throughout the UK, we're seeing more patients than ever before and often with fewer staff. Sadly, it is likely that this will be increasingly challenging as we head into the winter months, but we would like to reassure you that we are doing all we can to support our patients as promptly and safely as we can while providing the highest quality care.

Due to the high demand, we apologise for the long waits you may face when trying to contact the surgery via telephone. If your query/call is not urgent then please, try to phone later in the day as the lines tend to be not as busy then. Reception answered around 5500 calls in June alone.

TEAM UP - The new ACUTE HOME VISITING Service

Housebound and residential/care home residents who need medical assessment in their own home now have a new team providing this service across the region. "Team Up" is a Derbyshire-wide initiative which is aimed at bringing community services together and helping

to bridge divides between health, social care and therapy services who provide care at home. South Hardwick Primary Care Network (PCN) incorporates 9 GP surgeries including Staffa Health as well as practices in North Wingfield, Wingerworth, Clay Cross & Alfreton, and the new Acute Home Visiting Service covers the 70,000 patients registered at these 9 practices. The Team Up Acute Home Visiting team consists of 3 Community GPs, 5 Advanced Clinical Practitioners, a Senior Healthcare Assistant, 2 Care co-ordinators and 2 administrators as well as clinical and operational leadership. Team Up has worked closely with Staffa Health surgery in the development of this service, as Staffa Health were already providing a comprehensive home visiting service. Team Up have been providing home visits for Staffa Health since the beginning of July 2023, although as patients you may not have noticed this change as many familiar faces remain within the Team Up team.

From a patient's perspective, you should still call the surgery for any medical issues in the first instance as early in the day as possible. If the On Call GP feels a home visit is required, they will arrange for a clinician from the Team Up team to visit you at home.

Tibshelf Car Park

We don't really have an update on this at the moment. We are still actively trying to expand the car park and extra spaces are in the new plans that were granted. We are continuing to have discussions with the Council and the ICB (Integrated Care Board) and will keep the public updated on this.

Flu Vaccinations

Flu season is fast approaching, and we are planning our 2023 campaign which will start in September. The flu clinic dates are

shown below and are available to view on our website, Facebook page and in Surgery.

Anyone can get flu, but it can be more serious for certain people. Therefore, the NHS offers free vaccinations to all those 'At Risk' patients. If you choose to attend the surgery for your flu jab, you will be vaccinated by a qualified member of our Nursing/GP team, who will have access to your medical records.

This year, more than ever, we ask that you support your NHS GP

surgery by booking your flu jab with us. Many people believe they are helping to ease the burden on the surgery by having their vaccination done elsewhere, but seasonal vaccinations generate valuable income on which we rely. This income enables us to continue offering the services that we provide, and we encourage you to support your local GP practice and the NHS.

We continue to thank all of our patients for their kindness, understanding and support.

Well Pharmacy

Flu Jab

Well, it's that time again everyone and we are now starting to take Flu jab bookings for anyone who wishes to be vaccinated.

This is a great service for all and not only does it protect you it also helps protect others too. As of recent years, the Flu vaccine has been extremely popular so at times it has been difficult to get stock from the manufacturer that is why we have our booking service to help us get the vaccines in for our patients. The vaccine will be available from mid September and will run through till early 2024.

You can book online via our website at www.Well.co.uk/flujab or visit our store and ask a member of the team for a day and time that suits you.

We also provide Pneumonia vaccines to anyone who wish be protected just visit our store or call 01773 875550. Thank You



St Mary's Church

We've been here for 150 years! Wow! It is so good to celebrate this very special anniversary with the people of Pilsley. The church and village have been growing together ever since the establishment of collieries in the mid-1800s caused a dramatic expansion to our area. I wonder how many pairs of feet have walked up the short path to the church over the years.

While the collieries are long gone, the village and church remain; together, we are Pilsley. To not have St Mary's as a spiritual focal point in this area would be unthinkable; if you want to know more about Jesus, we would love to hear from you!

We have had our plant sale and well dressing, and next is the wedding dress exhibition. We will have a historic exhibition in church from 9th September, and then two special services in October, first with the Bishop of Repton, and then with our former Vicar, Karen Hamblin, who is now the Archdeacon of East Derbyshire. And then we draw breath ready for Christmas.

Oh, and then there's the work on the South Wall; you have probably seen the scaffolding. The Victorian church building may be a beacon of light bringing the ever-relevant message of the bible to new generations of Pilsleyites, but it wasn't especially well built. It is on a sloping site with shifting ground that constantly challenges the structure to hold itself together, which it is doing, but only just! We've raised most of the money for the work, but we do need a bit more.



Reverend Richard Clark

We look forward to seeing you at some point soon.

Wedding Dress Exhibition from Saturday 5th August

The wedding dress exhibition opens next weekend in St Mary's Church. Open every weekend from 10am - 2pm on Saturdays and 11am - 2pm on Sundays. View the amazing dresses from weddings that took place in St Mary's Church from the 1940's to the present day and photographs from the early 1900's. Enjoy refreshments and home-made cake.

St Mary's Church 150th Anniversary commemorative book

A book commemorating St Mary's 150th Anniversary has been wonderfully put together and is now available to buy. They cost £8 each and any proceeds will go towards the South Wall Fund. Available in church.

Pilsley Community Football Club

Although we are in the close season preparations are well under way for the 2023/2024 season.

Again, with help from the Football Foundation, and with the great work provided by Pugh Lewis, thousands of pounds have been spent on renovating the main pitch at the sports ground ready for the new season. Every year this work is carried out it is improving the quality of the surface in preparation for the heavy use it receives throughout the season.

All age groups are also making preparations for the new season with teams from under seven through to 2 adult's teams.

The club are also busy making plans for next summer, which will mark the 10th anniversary of the founding of the club in 2014. This will be a great time to celebrate the growing success of the club and we are looking to mark the occasion with several events next summer. Watch this space for more information as these plans come together.

Women's Institute (WI)

The WI welcomes ladies of all ages and interests. It takes place the second Tuesday of the month at St Mary's Hall in Pilsley at 7pm and we usually finish around 9am - 9.15am. It offers a variety of different speakers and activities - this year we have had Baroness Bolsover, crafts and many other things - as well as days out.

In October we have a cookery demonstration which, last year, was a great success with tasting afterwards. Visitors are welcome to pop into this meeting to see what we are all about.

Pilsley Village Sports Association

Over recent months, the PVSA have been busy working with the Hardwick Road race organising committee to help organise the fantastic event that was held on the 20th of July. Again, hundreds of runners enter the event, that has become a much loved one for the village. It was also great to see the lady's winner coming in with the new record time for the 10k event.

July has also seen the completion of the much needed car park extension. As the use of the sports ground has increased since the opening of the new pavilion, the provision of sufficient parking spaces has been a challenge. The car park has now increased by 50% which will go a long way to solving these problems. Many thanks to the Parish Council for their support in completing these works.

Some of you may have noticed a new fixtures board at the entrance of the car park, this will be updated weekly with information of the fixtures of the cricket and football clubs, as well as another event taking place at the sports ground. Please keep an eye out and if you have any time to come up and support your local clubs it would be great to see you!

Many thanks to Salon 5 for being the first sponsor of the fixture board.

Finally, the PVSA would like to thank the development and building companies at the Hallgate Lane development. Forge New Homes and Caddick Construction have been supporting the sports clubs and PVSA since starting work at the site, including the provision of the ball stop netting behind the pitch and sponsorship for other equipment. This is really appreciated and shows how commercial companies can work with the local communities within which they are working to make a positive impact.

Cricket

In an Ashes summer, Pilsley and Clay Cross Cricket Club are having another strong season with the 1st team pushing for promotion and emerging talent within the juniors.

Senior Cricket – having gained promotion last year, our 1st team (captained by Tris Bowers) are again looking to make it twice in two years, and with 5 games left they are 3rd in Division 6N. The first team also had a successful Wright Cup – T20 cup competition – reaching the semi-final stage before losing to Sawley CC.

The 2nd team (captained by Steve Eyre) are finding this year challenging and are at the relegation end of their division. However, with 3 games left and an important game against Selston CC coming up, there's everything to play for. The 2nd team have continued to play juniors in every game, and it's been great to see a

number of juniors in the club make the transition to senior cricket.

Junior Cricket. Our Junior Cricket practice nights are held on Thursday's each week, and this year we managed to secure the support of a Derbyshire Cricket Foundation coach for two months, and with the support of Ian Worthy and Mick Gregory, helped the juniors develop their skills and confidence in hardball cricket. Our thanks to Andrew Cooper for organising the DCF Coach.

Our Kwik cricketers (this year coached by Ian Knowles and John Worthy) are one of the strongest teams in their league, winning most games this season. Kwik festivals are on a Friday evening and with each club hosting festivals, Pilsley have hosted 2 Kwik festivals this year. With a BBQ available and bar open, these have proved popular with local residents as well as the other clubs.

U11 and U13 Hardball – after a slow start, our Under 11's improved week on week, with wins against Marehay and a final game win against Ashover (league

champions). This team will be even stronger next year as it was the first year a number of the U11's played hardball. Our U13's also had a tough start with games against big clubs such as Denby and Alfreton, but confidence was restored with close games against Selston and Riddings. With strong additions to the junior teams, we're already looking forward to 2024.

Look out for two community cricket days in September. On the 10th September, there will be a T20 game between a cricket club X1 and a football club X1. Later in the month, we'll also have our annual inter-club day in memory of former Chairman Kev Jones. A bar and BBQ will be available on both days and your support is very welcome.

Next year, we'll be entering a Women's Softball team into the DCCL league. Games are held on a Sunday morning and it's a great way to become involved in local sport, meet new people and have a great time. Women of all abilities are encouraged to participate – more information on this next Spring!

Your Councillors

Chairman of the Council

Mike Shaw

December Cottage,
54 Morton Road,
Pilsley S45 8EF
Tel: 01773 590833

Vice Chairman of the Council

Stuart Stone

9 Pear Tree Road,
Pilsley, S45 8HU
Tel: 01773 270628

Andrew Cooper

7 Hardstoft Road,
Pilsley, S45 8BL
Tel: 01773 875053

Daniel Higgon

Tel: 01246 231111
Email: Daniel.Higgon@ne-
derbyshire.gov.uk

Your County Councillor

Kevin Gillott

11, Elton Close,
North Wingfield,
S42 5HQ
Tel: 07786 702 230

Your Member of Parliament

Mark Fletcher

1 Market Place,
Bolsover S44 6PN,
Tel: 01246 933048

The House of Commons Answering Service

London SW1A 0AA
Tel: 0207 219 3000
Ask for MP by name.

Contacting Pilsley Parish Council

If you wish to contact the Council, the Parish Clerk is
Mrs Kath Gruber, Tel: 07595 515154

Email: clerk@pilsleyparishcouncil.org.uk

The Communications Officer is **Brett Marriott,**
Email: communications@pilsleyparishcouncil.gov.uk

Follow us on Facebook:

www.facebook.com/Pilsley-Parish-Council

This newsletter is now available online by scanning
the QR code below.



SCAN ME